

CARESS / CARESS ANNEX

WEDDING
PARTY PLAN



PRICE LIST

BASIC CHARGE

*All prices include tax.

venue	CARESS		CARESS ANNEX
Reservation fee (Deposit)	33,000円		
Food and drink charges	*Please pay in advance when making this reservation.		
	light one person 4,400 yen	casual one person 5,500 yen	standard one person 6,600 yen
Meals are buffet style and drinks are free for 1.5 hours.			

OTHER PRICE

*Billing will be based on
the number of people actually visiting the store.

Wedding cake	1 tier 33,000 yen 40cm × 30cm × 10cm	2 tiers 44,000 yen 1 stage + half	Half22,000yen 20cm × 15cm × 10cm
Drink extension	30 minutes extension 330 yen per person The usual 1.5 hours of free drinks will be extended to 2 hours.		1 hour extension 550 yen per person The usual 1.5 hours of free drinks will be extended to 2.5 hours.
Photo plan	38,500 yen We will arrange a photographer on the day and deliver approximately 200 shots as USB data. In case of extension, +5,500 yen per 30 minutes		
30 minutes extension	33,000 yen You can use the service for 3 hours and 30 minutes instead of the usual 3 hours. Example: For a casual plan for 40 people, you save 2,200 yen.		
1 hour extension	55,000 yen You can use it for 4 hours instead of the usual 3 hours. Example: For a casual plan for 40 people, you save 15,400 yen.		

*For each other store, there is a private business guarantee fee for each month.

PARTY TOOLS

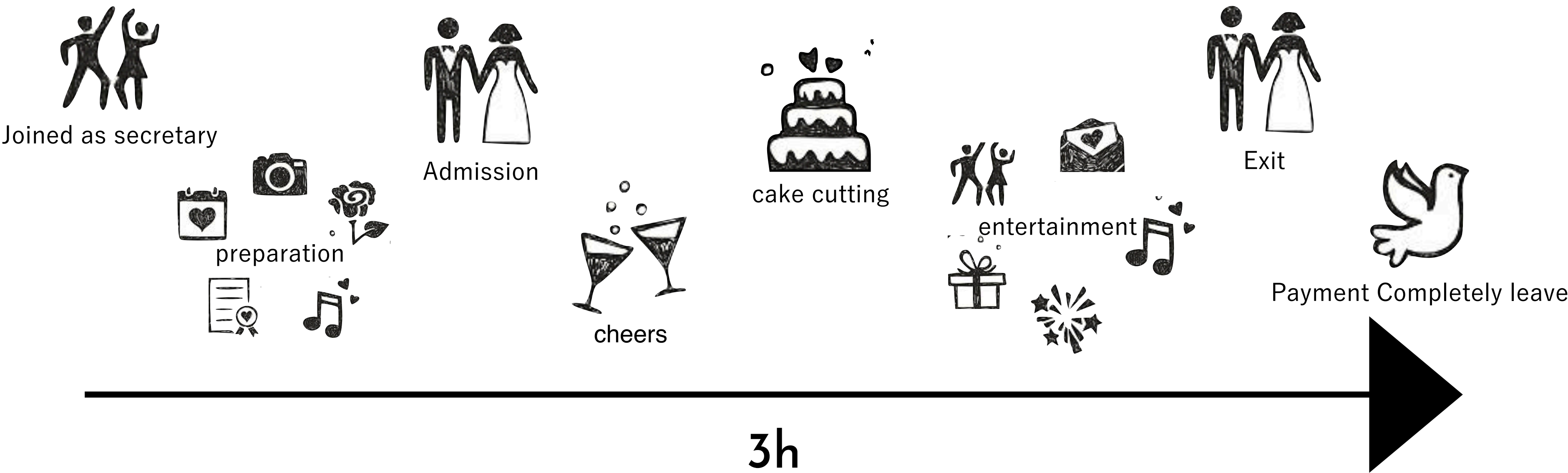
Bingo table	2 wireless microphones
Color pen	DVD player <i>*There are no DVDs in the annex open bakery.</i>
Easel	Hdmi cable Video output from computer
Cloakroom/Waiting room <i>*The annex open bakery is available for groups of 40 or more.</i>	RCA terminal Audio output from computers, mobile phones, and tablets
Hanger / Hanger rack	Mixer YAMAHA MG102C
Lottery BOX / Small gift basket	In-store projector

**There is no stage spotlight equipment.*

FLOW & Q & A

The available time is 3 hours from preparation to complete departure.

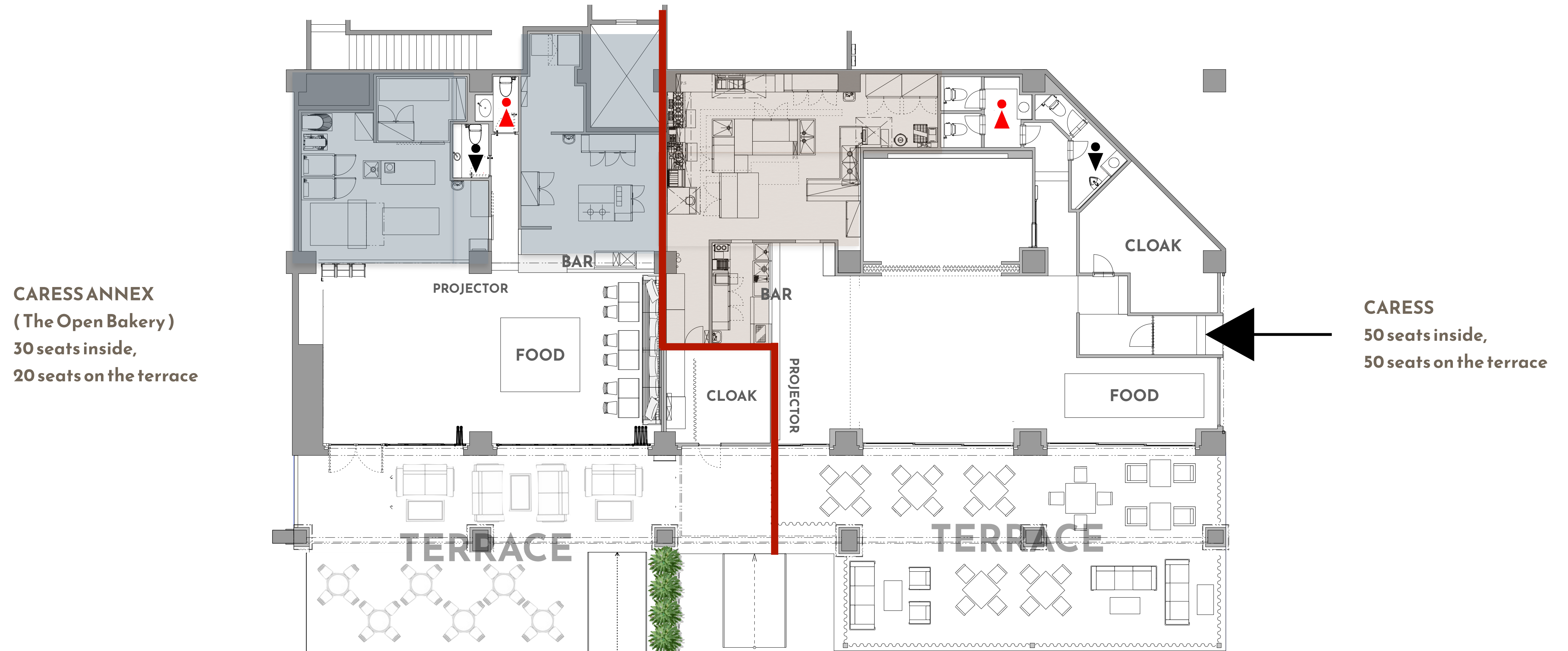
**If you are late, an extension fee will be charged.*



Q	A
Can I send my luggage in advance?	This is possible from the day before. Please arrive between 14:00 and 16:00.
Is there a delivery fee?	Only the cake will be charged. (11,000 yen including tax and service charge)
By when should I tell you the final number of people?	Please let us know one week before the event date.
Is there a cloakroom or waiting room?	Yes. Customers are responsible for managing their luggage.
How do I pay?	Payment will be made in cash after you have completely left the room.
How are extension fees added?	A fee of 10% of the total amount will be charged for every 15 minutes.

LAYOUT MAP

Both stores are connected and located next to each other. In the layout map below,
Cares is on the right and Cares Annex (open bakery) is on the left.



THE OPEN BAKERY



C A R E S S



FOOD & DRINK

4400yen / RIGHT
7 to 9 types, mainly appetizers and bullets *Dessert not included
5500yen / CASUAL
5-6 types of appetizers, 4-5 types of pasta & pizza, 1-2 types of meat dishes, Assorted dolce
6600yen / STANDARD
6-8 types of appetizers, 4-5 types of pasta & pizza, 2-3 types of meat dishes, Assorted dolce
DRINK / 1.5h~
Beer (Kinmugi) / Wine / Whiskey / Shochu / Various cocktails / Various soft drinks

PARTY COURSE

RIGHT

4400yen

-Appetizer-

Today's canape

mixed green leaf salad

Bagna cauda with seasonal vegetables

Caprese with cherry tomatoes and
mozzarella

Beef ham bresaola

Salmon and avocado tartare

White fish and spicy potato frit

Assorted homemade bread

CASUAL

5500yen

-Appetizer-

Today's canapé

mixed green leaf salad

Bagna cauda with seasonal vegetables

Caprese with cherry tomatoes and mozzarella

Beef ham bresaola

Salmon and avocado tartare

White fish and spicy potato frit

-Pasta-

Example of 2 types of pasta of the day

Penne Arrabbiata with fried eggplant and bacon

Vongola Bianco Spaghetti-2

-Pizza-

pizza margherita

-Main-

oven-roasted chicken

-Assorted Dolce-

STANDARD

6600yen

-Appetizer-

Today's soup

Bagna cauda with colorful vegetables

Romaine lettuce mimosa caesar salad

Assorted Spanish ham and bresaola

Sauteed scallops and broccoli with herb butter sauce

Salmon and onion escapesh

Seafood frit mist tartar sauce

-Pasta-

Example of today's 3 types of pasta

Conchiglie of bigfin squid and green seaweed cream

Seafood puttanesca spaghetti

Bolognese with fried eggplant and mozzarella

-Pizza-

Pizza Margherita / Pizza Quattro Formaggio

-Main-

Grilled Iberico pork with mustard sauce

-Assorted Dolce-

ADDITIONAL

You can add party food if you wish.

1K POTATO

Sprinkled with plenty of parmesan cheese
French fries with skin served with truffle mayo

5,000yen (1kg)

PASTA

You can add party pasta at your discretion.

1casserole 10,000yen (700g)

Harf 5,000yen (350g)

*If you have a specific preference,
please let us know in advance. Prices also vary

PIZZA

You can choose from 7 types of pizza

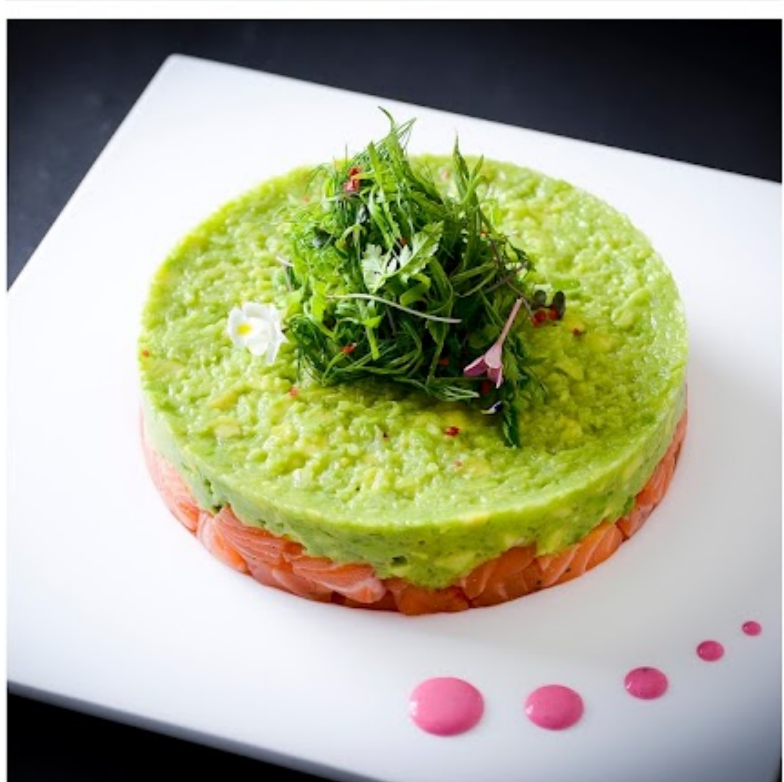
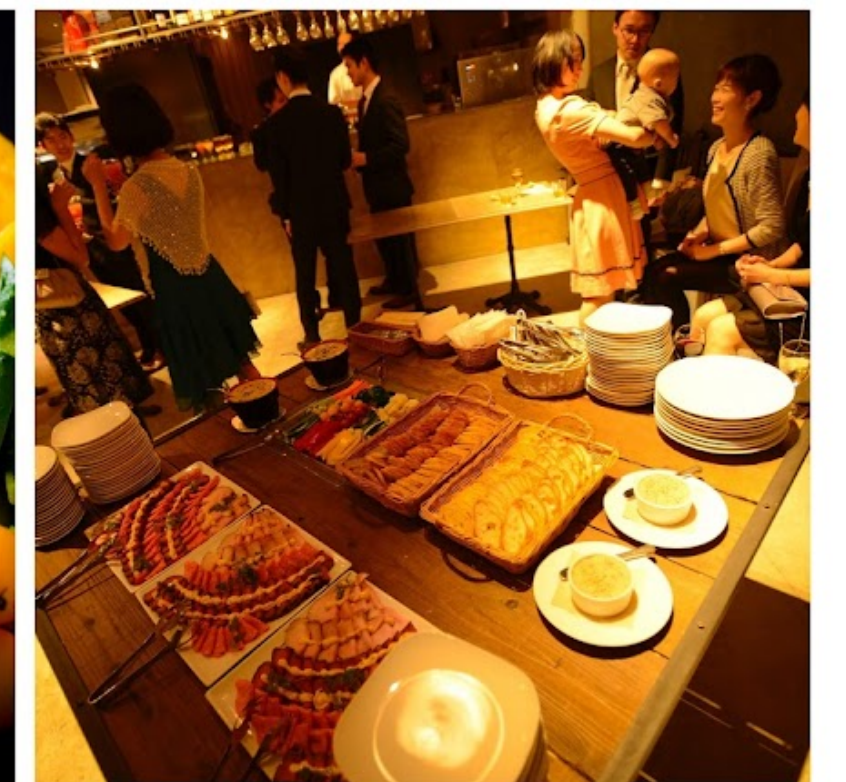
1,650yen~ (φ 27cm)

All Prices Include Sales Tax

This is a example of menu for a party of 40 to 80 people.

Please note that the content of menu may change for the number of people or due to market circumstances.

PARTY FOOD IMAGE



Free Flow



DRAFT BEER

Draft Beer ドラフトビア
Shandy Guff シャンディガフ
Cassis Beer カシスビア
Pear Beer 洋梨ビア
Campari Beer カンパリビア



JUICE AND SODA

Orange Juice オレンジジュース
Grape fruits Juice グレープフルーツジュース
Ginger Ale ジンジャーエール
Oolong Cha 烏龍茶
Tonic Water トニックウォーター



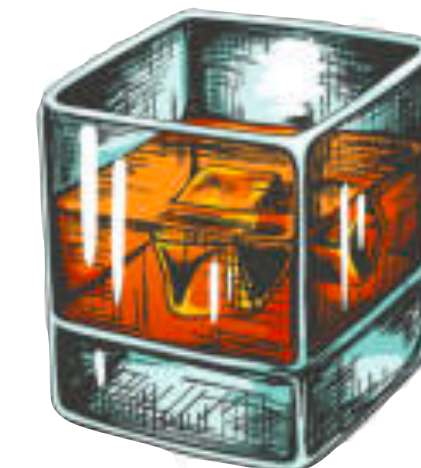
COCKTAILS

Amaretto Ginger アマレットジンジャー
Spumoni スプモーニ
Fazy Nable ファジーネーブル
Darjeeling Cooler ダージリンクーラー
Bulldog ブルドック
Sol Cubano ソルクバーノ



WINE

By the glass グラスワイン
Kir キール
Operator オペレーター
Kitty キティ



SPIRITS

Lemmon Sour 檸檬サワー
Highball ウイスキーハイボール
Whisky Ginger ウイスキージンジャー
Gin and Tonic ジントニック
Moscow Mule モスコミュール

Free drinks usually last for 1.5 hours. Can be extended

※画像はイメージです。

Terms of service

When using our venue for events such as receptions, second parties, and other private parties (hereinafter referred to as "parties"), you are required to adhere to these terms and conditions:

1.Payment of the Reservation Deposit: (Advance Payment), hereinafter referred to as the "reservation deposit"
①For second parties and other private events at Caress and Caress Annex: JPY 33,000.

If you are unable to visit as planned, we offer the option of payment through bank transfer. However, If the bank transfer and confirmation of this contract are not completed by the specified date, we regret to inform you that we will give priority to other customers. Please be aware of this and make necessary arrangements.
Please note that the reservation deposit, once confirmed, is non-refundable for any reason.

Bank Transfer Information:

Pay Pay Bank, Account Number: 4816935, Account Name: 株トラツド (Trusted Co., Ltd.)

※Make sure to input the event date and your name.
Please bear the bank transfer fee.

②Payment of the Remaining Balance:

For second parties and other private events,,, settle the amount calculated according to the reservation form in cash after the party concludes.

2.Confirmation of Paid Guests (Number of Guests for Meals):

Notify us of the number of guests for whom meals will be prepared ("paid guests") by **7 days before the scheduled date.** After this deadline, all arrangements will be finalized. If the number of paid guests decreases, the fee for the reduced number will still be charged. If the number exceeds the reserved amount, we will prepare additional meals and charge accordingly.

3.Cancellation Fee:

If you cancel a confirmed reservation due to your circumstances, the following cancellation fees will apply. Phone cancellations or cancellations by a representative will not be accepted. No cancellation fees will be charged during periods when the restaurant cannot operate due to our fault or societal conditions (e.g., natural disasters, city lockdowns).

Cancellation Fees for Second Parties and Other Private Events:

- ① 90 to 81 days before the scheduled date: Reservation deposit + 10% of the business guarantee fee.
- ② 80 to 61 days before the scheduled date: Reservation deposit + 30% of the business guarantee fee.
- ③ 60 to 31 days before the scheduled date: Reservation deposit + 60% of the business guarantee fee.
- ④ 30 to 15 days before the scheduled date: Reservation deposit + full business guarantee fee.
- ⑤ 14 days before the scheduled date to the day of the event: Full amount of the estimate.

Regarding Date and Time Changes:

If circumstances force a date and time change, we will accommodate changes up to 12 months (360 days) from the reservation date. Changes requested beyond 361 days from the reservation date will be treated as cancellations.

Additionally, if the date of the reservation is beyond 3 months (90 days) but within 12 months (360 days), we kindly request the payment of the guarantee fee in advance. Please note that the term "reservation date" here does not refer to the date of any changes. For more details, please contact our staff.

4Arrangements for each vendor:

Concerning costumes, decorations, music, photography, MC, and other productions related to the party, if you directly engage service providers other than our venue, please contact our representative in advance. Once the arrangements are finalized with us, please proceed with the formal arrangements. In this case, there may be separate discussions between the engaged service provider and our venue.

5.Compensation for Damages:

If any damages are caused to our facilities, fixtures, etc., by service providers directly engaged by you or related parties (including all parties on your side), we will provide instructions for repair. We kindly request prompt repair or that you bear the responsibility for compensation.

6.Cancellation:

If a customer attending the party is deemed to engage in actions contrary to laws or public morals by our venue, or if the final estimate amount presented by us is not paid by the deadline, we reserve the right to refuse the party application or terminate the agreement even if it has already been concluded. Please note that in case of termination, cancellation fees will apply. Prohibited Activities

7.The following actions are not permitted:

- ① Use for purposes not approved by our venue in advance other than the intended use stated in the application.
- ② Acts judged by our venue to significantly damage the store's image.
- ③ Acts contrary to public morals (e.g., undressing)
- ④ Acts causing inconvenience to other customers or neighbors
- ⑤ Moving fixtures.
- ⑥ Bringing in dogs, cats, birds, or other animals.
- ⑦ Bringing in flammable or dangerous materials.
- ⑧ Other activities prohibited by law.

8.Other Notes:

• Regarding valuables, please manage them yourself as we cannot take responsibility for any losses

• For decorations and sound, please obtain approval from the responsible person in advance.

• Strict adherence to the party's start and end times is requested. If you exceed the designated exit time,

※additional charges will apply in 15-minute increments (10% of the total amount per 15 minutes).

• Time extensions are possible only if there is no subsequent reservation, and extension fees will be charged.

• Extension fees: JPY 500 per person per 30 minutes (excluding tax), including drinks.

• We do not provide currency exchange services, so please bring your own.

• While we strive to ensure the proper functioning of equipment, we cannot guarantee performance degradation caused by customer use. Please be aware of this.

ACCESS MAP

Address : 1-3-5-102 Daiba, Minato-ku, Tokyo

Nearest station : 2 minutes walk
from Odaiba Kaihin Koen Station

Phone number : 03-6382-9966

