

# CARESS / CARESS ANNEX

## PARTY GUIDE

**This document is a party guide for general private parties.**

**Please see the wedding page for materials for the wedding after-party.**

# PRICE LIST

## BASIC CHARGE

\*All prices include tax。

	CARESS		CARESS ANNEX
Food and drink charges	casual one person 5,500 yen	standard one person 6,600 yen	high class one person 7,700 yen
	Meals are buffet style and drinks are free for 1.5 hours.		

## OTHER PRICE

\*Billing will be based on  
the number of people actually visiting the store.

Drink extension	30 minutes extension 330 yen per person The usual 1.5 hours of free drinks will be extended to 2 hours.
30 minutes extension	33,000 yen You can use the service for 3 hours and 30 minutes instead of the usual 3 hours.
利用時間 1 時間延長	55,000 yen You can use it for 4 hours instead of the usual 3 hours.

\*For each other store, there is a private business guarantee fee for each month.

# PARTY TOOLS

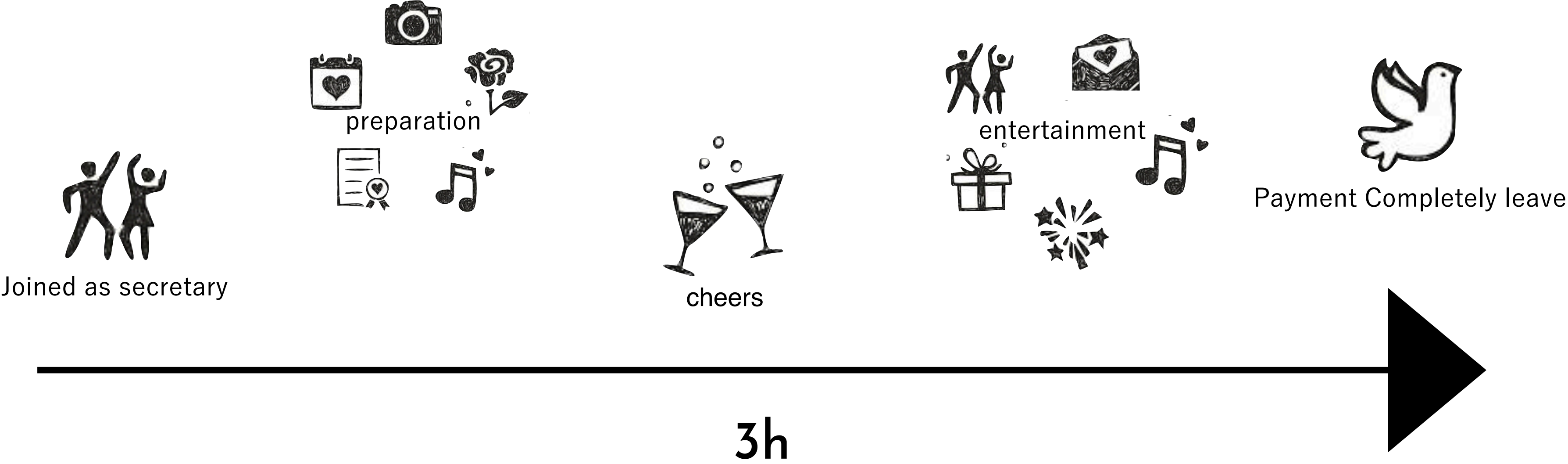
Bingo table	2 wireless microphones
Color pen	DVD player <i>*There are no DVDs in the annex open bakery.</i>
Easel	Hdmi cable Video output from computer
Cloakroom/Waiting room <i>*The annex open bakery is available for groups of 40 or more.</i>	RCA terminal Audio output from computers, mobile phones, and tablets
Hanger / Hanger rack	Mixer YAMAHA MG102C
Lottery BOX / Small gift basket	In-store projector

*\*There is no stage spotlight equipment.*

# FLOW & Q & A

The available time is 3 hours from preparation to complete departure.

*\*If you are late, an extension fee will be charged.*



Q	A
Can I send my luggage in advance?	This is possible from the day before. Please arrive between 14:00 and 16:00.
Is there a delivery fee?	Only the cake will be charged. (11,000 yen including tax and service charge)
By when should I tell you the final number of people?	Please let us know one week before the event date.
Is there a cloakroom or waiting room?	Yes. Customers are responsible for managing their luggage.
How do I pay?	Payment will be made in cash after you have completely left the room.
How are extension fees added?	A fee of 10% of the total amount will be charged for every 15 minutes.

# PARTY COURSE

## CASUAL

5500yen

-Appetizer-

Today's canapé

mixed green leaf salad

Bagna cauda with seasonal vegetables

Caprese with cherry tomatoes and mozzarella

Beef ham bresaola

Salmon and avocado tartare

White fish and spicy potato frit

-Pasta-

Example of 2 types of pasta of the day

Penne Arrabbiata with fried eggplant and bacon

Vongola Bianco Spaghetti-2

-Pizza-

pizza margherita

-Main-

oven-roasted chicken

## STANDARD

6600yen

-Appetizer-

Today's soup

Bagna cauda with colorful vegetables

Romaine lettuce mimosa caesar salad

Assorted Spanish ham and bresaola

Sauteed scallops and broccoli with herb butter sauce

Salmon and onion escapesh

Seafood frit mist tartar sauce

-Pasta-

Example of today's 3 types of pasta

Conchiglie of bigfin squid and green seaweed cream

Seafood puttanesca spaghetti

Bolognese with fried eggplant and mozzarella

-Pizza-

Pizza Margherita / Pizza Quattro Formaggio

-Main-

Grilled Iberico pork with mustard sauce

-Assorted Dolce-

## HIGH CLASS

7700yen

-Appetizer-

Parmesan and fresh arugula insalata

Buffalo mozzarella cheese and fruit tomato caprese

Assorted Spanish ham and Iberico pork salami

Sauteed scallops and broccoli with herb butter sauce

Marlin tuna cutlet with tomato quekka sauce

Etc.. 8 types in total

-pasta-

North Sea Snow Crab Crab Miso Cream Tagliolini

Peperoncino with red sea bream and fresh tomato

A5 Wagyu beef bolognese rigatoni

-Pizza-

Stone oven baked dough aged for 36 hours

margherita

Quattro Formaggio

Pot-fried whitebait pizza

-Main-

Roasted A5 Wagyu beef and seasonal vegetables

Red wine sauce truffle flavor

-Assorted Dolce-

## ADDITIONAL

You can add party food if you wish.

### 1K POTATO

Sprinkled with plenty of parmesan cheese  
French fries with skin served with truffle mayo

5,000yen (1kg)

### PASTA

You can add party pasta at your discretion.

1casserole 10,000yen (700g)

Harf 5,000yen (350g)

\*If you have a specific preference,  
please let us know in advance.Prices also vary

### PIZZA

You can choose from 7 types of pizza

1,650yen~ (φ 27cm)

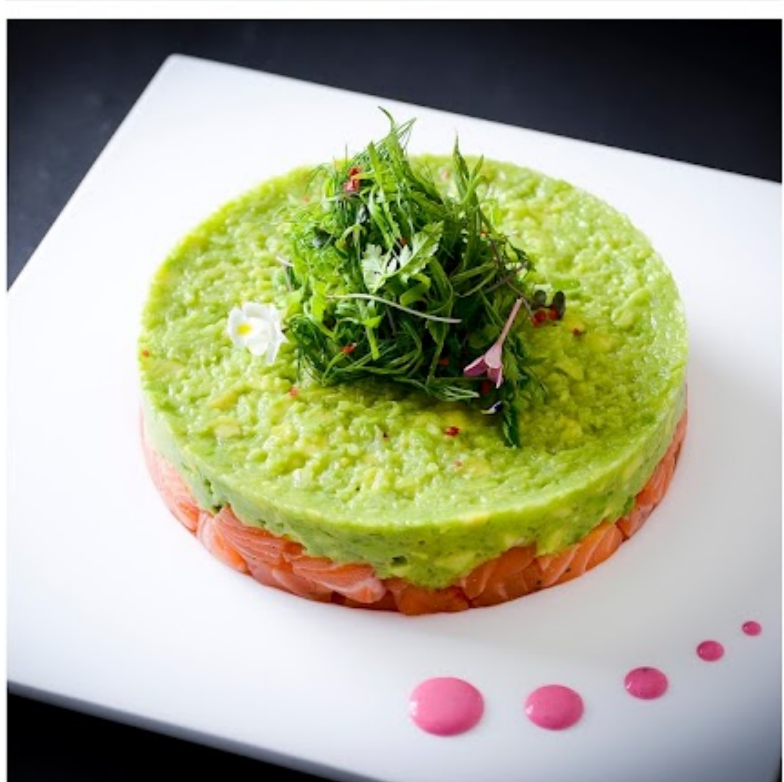
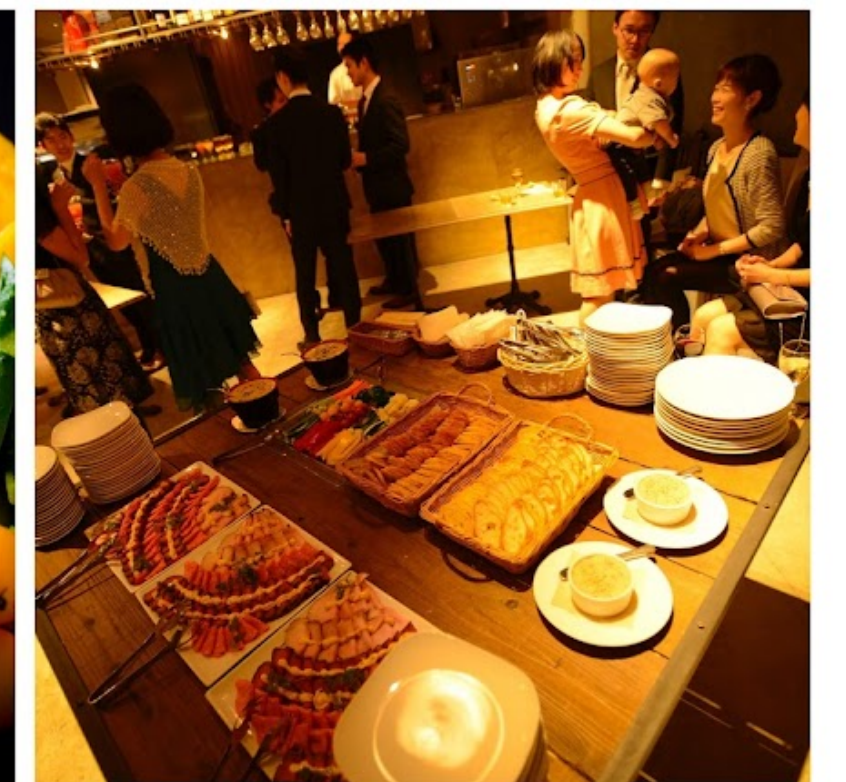
All Prices Include Sales Tax

This is a example of menu for a party of 40 to 80 people.

Please note that the content of menu may change for the number of people or due to market circumstances.



# PARTY FOOD IMAGE





# Free Flow



## DRAFT BEER

Draft Beer ドラフトビア  
Shandy Guff シャンディガフ  
Cassis Beer カシスビア  
Pear Beer 洋梨ビア  
Campari Beer カンパリビア



## JUICE AND SODA

Orange Juice オレンジジュース  
Grape fruits Juice グレープフルーツジュース  
Ginger Ale ジンジャーエール  
Oolong Cha 烏龍茶  
Tonic Water トニックウォーター



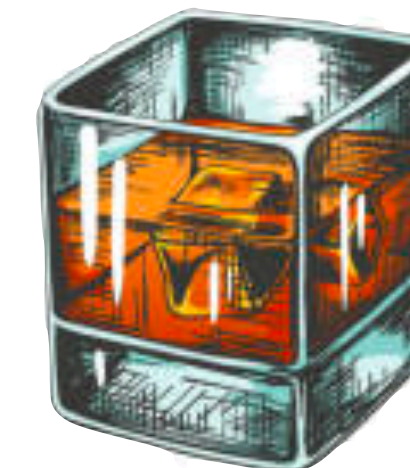
## COCKTAILS

Amaretto Ginger アマレットジンジャー  
Spumoni スプモーニ  
Fazy Nable ファジーネーブル  
Darjeeling Cooler ダージリンクーラー  
Bulldog ブルドック  
Sol Cubano ソルクバーノ



## WINE

By the glass グラスワイン  
Kir キール  
Operator オペレーター  
Kitty キティ



## SPIRITS

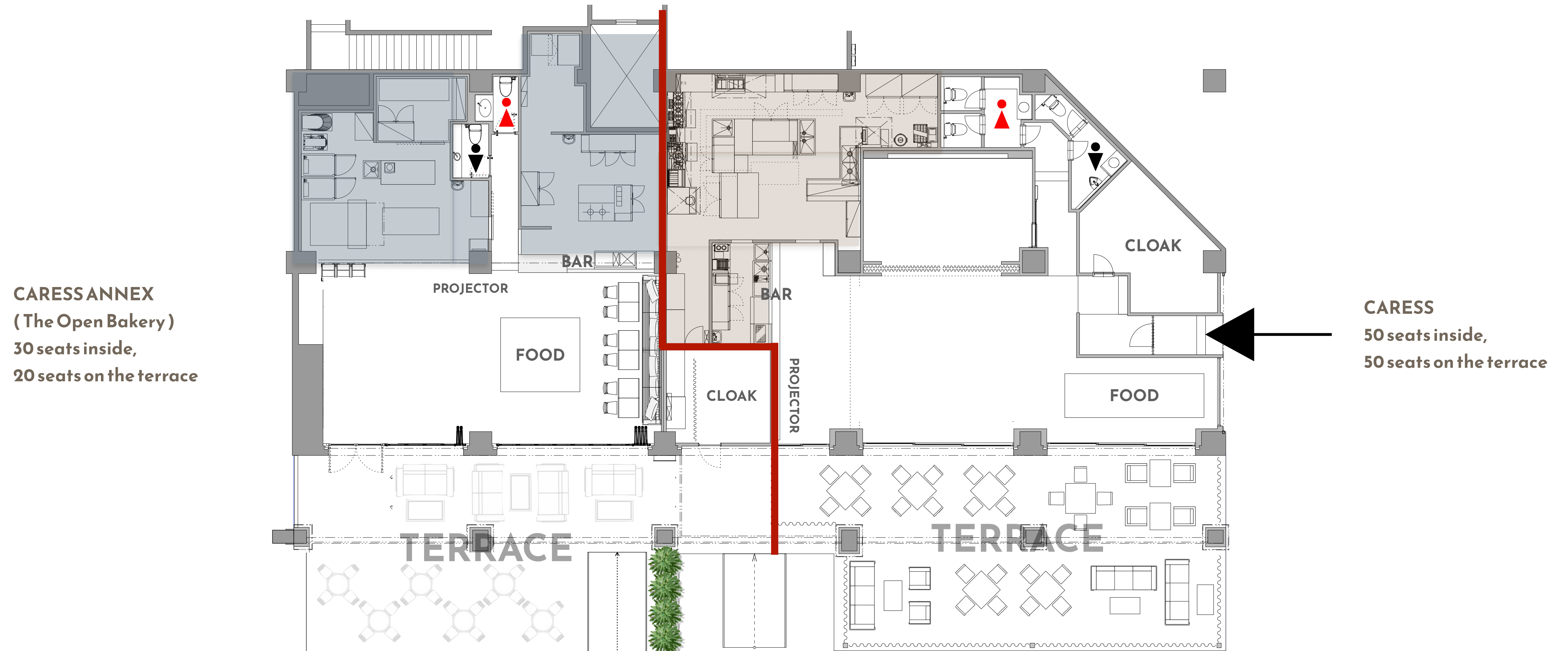
Lemmon Sour 檸檬サワー  
Highball ウイスキーハイボール  
Whisky Ginger ウイスキージンジャー  
Gin and Tonic ジントニック  
Moscow Mule モスコミュール

Free drinks usually last for 1.5 hours. Can be extended

※画像はイメージです。

# LAYOUT MAP

Both stores are connected and located next to each other. In the layout map below,  
Cares is on the right and Cares Annex (open bakery) is on the left.

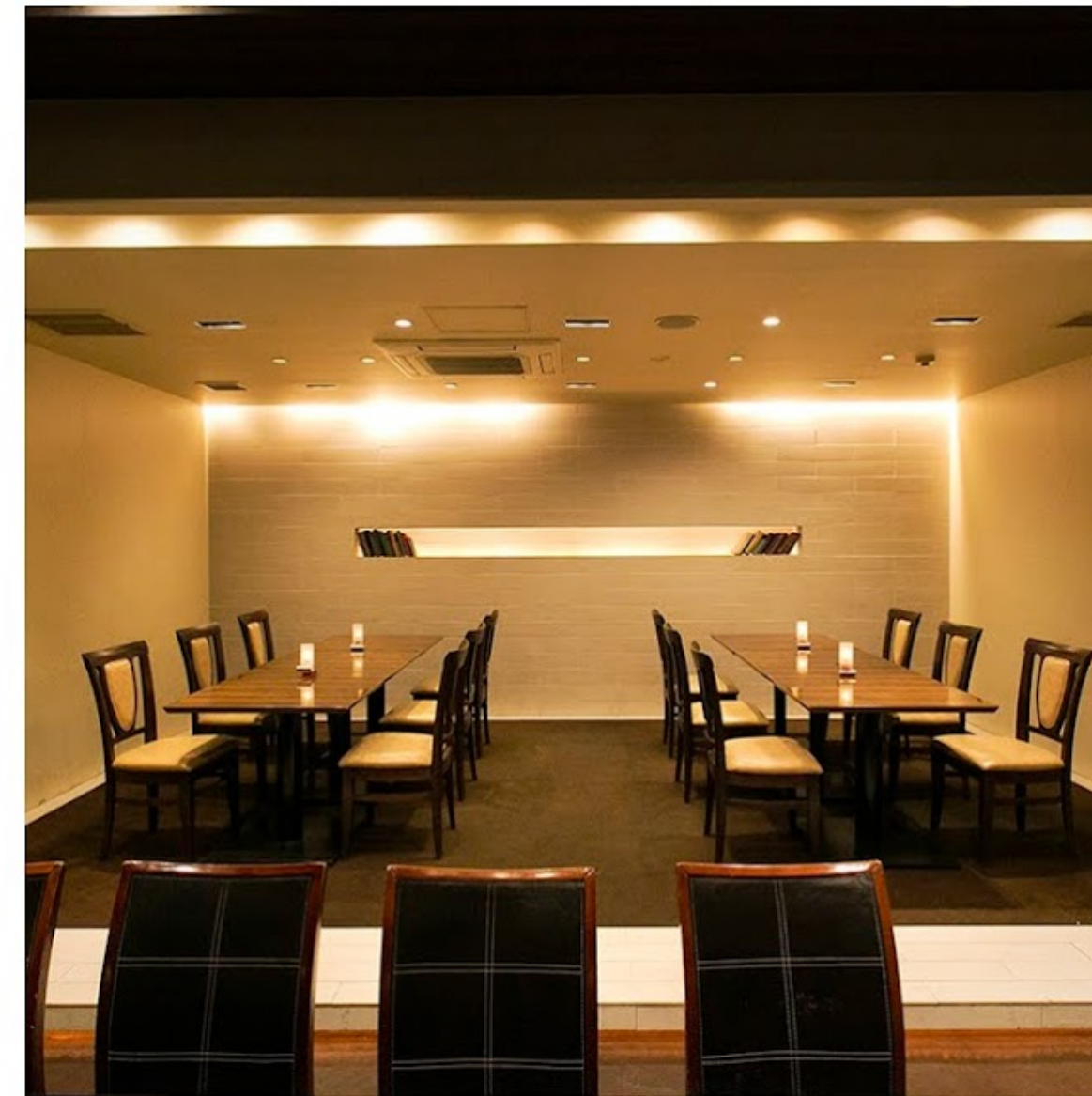




# THE OPEN BAKERY



# C A R E S S





# Terms of service

When conducting general private parties or events (hereinafter referred to as "parties") at our restaurant, you are required to comply with these terms and conditions.

Please note that these terms specifically apply to customers utilizing general private reservations. For private events such as wedding receptions or second weddings, the terms and conditions may differ. Please inquire with our staff for detailed information.

## 1.Payment Terms:

General Private Reservation

The price for the day, calculated based on the reservation form, is to be settled in cash or by credit card after the conclusion of the party.

Customers desiring to make a bank transfer are limited to those who have presented their business cards.

## Bank Transfer Information:

**Pay Pay Bank, Account Number: 4816935, Account Name: 株トラツド (Trusted Co., Ltd.)**

**※Make sure to input the event date and your name.**

**Please bear the bank transfer fee.**

## 2.Confirmation of Paid Guests (Number of Guests for Meals):

Notify us of the number of guests for whom meals will be prepared ("paid guests") by **7 days before the scheduled date**.

After this deadline, all arrangements will be finalized. If the number of paid guests decreases, the fee for the reduced number will still be charged.

If the number exceeds the reserved amount, we will prepare additional meals and charge accordingly.

## 3.Cancellation Fee:

If you cancel a confirmed reservation due to your circumstances, the following cancellation fees will apply.

Phone cancellations or cancellations by a representative will not be accepted.

No cancellation fees will be charged during periods when the restaurant cannot operate due to our fault or societal conditions (e.g., natural disasters, city lockdowns).

Cancellation Fees for Second Parties and Other Private Events:

- ① 90 to 81 days before the scheduled date: Reservation deposit + 10% of the business guarantee fee.
- ② 80 to 61 days before the scheduled date: Reservation deposit + 30% of the business guarantee fee.
- ③ 60 to 31 days before the scheduled date: Reservation deposit + 60% of the business guarantee fee.
- ④ 30 to 15 days before the scheduled date: Reservation deposit + full business guarantee fee.
- ⑤ 14 days before the scheduled date to the day of the event: Full amount of the estimate.

## 4.Arrangements for each vendor:

Concerning costumes, decorations, music, photography, MC, and other productions related to the party, if you directly engage service providers other than our venue, please contact our representative in advance.

Once the arrangements are finalized with us, please proceed with the formal arrangements.

In this case, there may be separate discussions between the engaged service provider and our venue.

## 5.Compensation for Damages:

If any damages are caused to our facilities, fixtures, etc.,

by service providers directly engaged by you or related parties (including all parties on your side), we will provide instructions for repair.

We kindly request prompt repair or that you bear the responsibility for compensation.

## 6.Cancellation:

If a customer attending the party is deemed to engage in actions contrary to laws or public morals by our venue,

or if the final estimate amount presented by us is not paid by the deadline, we reserve the right to refuse the party application

or terminate the agreement even if it has already been concluded. Please note that in case of termination, cancellation fees will apply.

Prohibited Activities

## 7.The following actions are not permitted:

- ① Use for purposes not approved by our venue in advance other than the intended use stated in the application.
- ② Acts judged by our venue to significantly damage the store's image.
- ③ Acts contrary to public morals (e.g., undressing)
- ④ Acts causing inconvenience to other customers or neighbors
- ⑤ Moving fixtures.
- ⑥ Bringing in dogs, cats, birds, or other animals.
- ⑦ Bringing in flammable or dangerous materials.
- ⑧ Other activities prohibited by law.

## 8.Other Notes:

• Regarding valuables, please manage them yourself as we cannot take responsibility for any losses

• For decorations and sound, please obtain approval from the responsible person in advance.

• Strict adherence to the party's start and end times is requested. If you exceed the designated exit time,

**※additional charges will apply in 15-minute increments (10% of the total amount per 15 minutes).**

• Time extensions are possible only if there is no subsequent reservation, and extension fees will be charged.

• Extension fees: JPY 500 per person per 30 minutes (excluding tax), including drinks.

• We do not provide currency exchange services, so please bring your own.

• While we strive to ensure the proper functioning of equipment, we cannot guarantee performance degradation caused by customer use.

Please be aware of this.



# ACCESS MAP

Address : 1-3-5-102 Daiba, Minato-ku, Tokyo

Nearest station : 2 minutes walk  
from Odaiba Kaihin Koen Station

Phone number : 03-6382-9966

